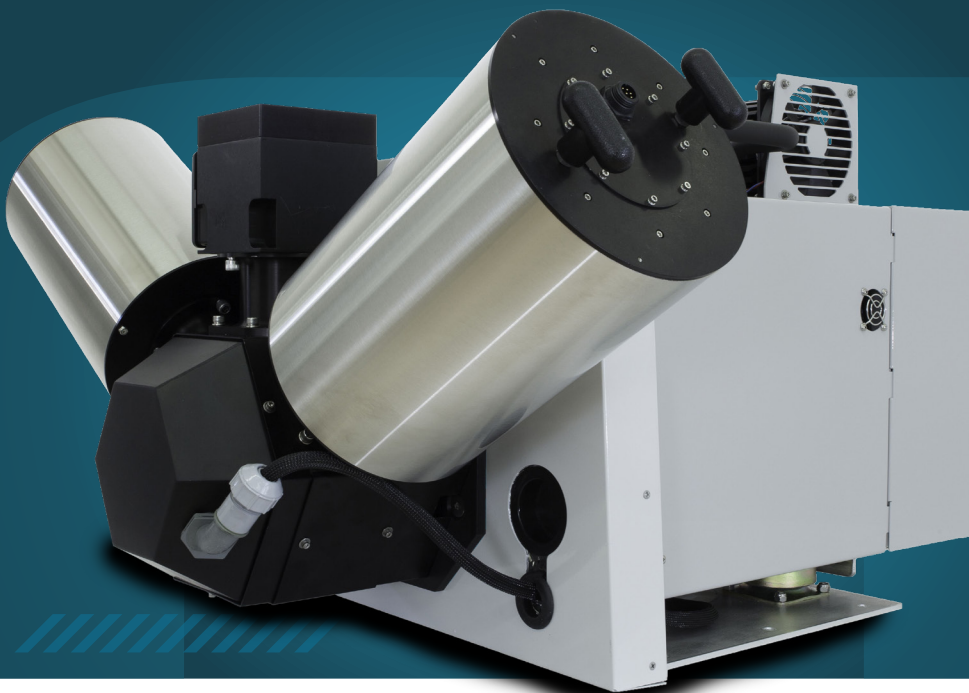


# HS-IR Family



*ATMOSPHERIC SOUNDER (ASSIST II)*

## KEY FEATURES



**HIGH SPECTRAL RESOLUTION:  
DOWN TO  $1 \text{ cm}^{-1}$**



**HIGH TEMPORAL RESOLUTION**



**WIDE BANDWIDTH: COVERS THE  
MWIR, LWIR RANGES (3 – 19 MM)**



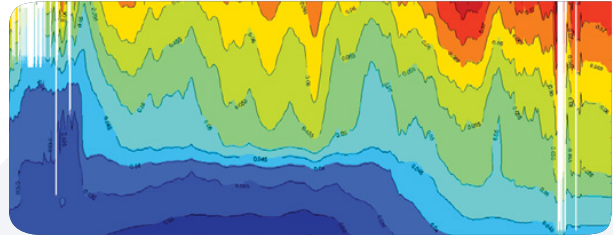
**COMPACT AND WELL ADAPTED FOR  
REMOTE LOCATIONS**



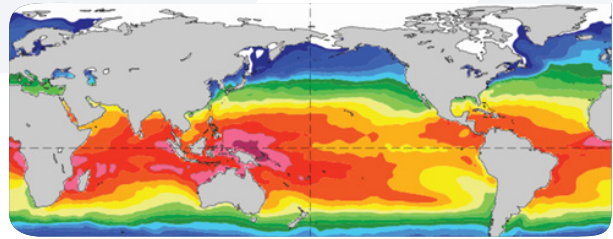
**OUTSTANDING RADIOMETRIC  
ACCURACY AND INSTRUMENT TO  
INSTRUMENT REPRODUCIBILITY**

The ASSIST II is a field deployable sounder which uses Fourier Transform technology. It is the latest development in ground-based atmospheric sounding spectrometer. Its configuration is rugged, compact and can be adapted to various environments, such as ground and sea platforms. Thanks to its advanced software suite, it can be operated 24/7 to provide atmospheric profiles of various components at high temporal and spectral resolutions as well as a wide choice of other applications.

# HS-IR Family



Trace gases concentration profiles at high temporal resolution automatically generated by the ASSIST II



Sea surface skin temperature

Typical applications

SPECIFICATIONS	ASSIST SERIES
Detector Type	HgCdTe (MCT), InSb detectors
Detector Format	Single-Pixel
Spectral Range	3 - 19 $\mu\text{m}$ (Optional extended range from 2 to 25)
Spectral Resolution	1, 2, 4, 8, 16, 32, 64, 128 $\text{cm}^{-1}$
Field of View (FOV)	45 mrad
Measurement Rate	1 spectra/s (At finest spectral resolution)
Atmospheric Profile Rate	0,5 profile/minute (At finest spectral resolution)
Typical NESR	2.5 @ 1300 $\text{cm}^{-1}$ $\text{nW/sr/cm}^2/\text{cm}^{-1}$ (At 16 $\text{cm}^{-1}$ spectral resolution and 1s observation time) 0.25 @ 2000 $\text{cm}^{-1}$ $\text{nW/sr/cm}^2/\text{cm}^{-1}$ (At 16 $\text{cm}^{-1}$ spectral resolution and 1s observation time)
Dimensions	90 x 79 x 50 cm (L x W x H ASSIST II Instrument) 140 x 102 x 163 cm (L x W x H ASSIST II Environmental Enclosure)
Weight	80 kg 195 kg (Including the Environmental enclosure)
Power Consumption	< 300 W (ASSIST-II) < 675 W (Including the Environmental Enclosure, AC On) < 300 W (Including the Environmental Enclosure, AC Off)
Operational Temperature	-30 $^{\circ}\text{C}$ to +40 $^{\circ}\text{C}$ (Including the Environmental Enclosure)



[info@infraredimaging.com](mailto:info@infraredimaging.com)

[exosens.com](http://exosens.com)

**EXOSENS**  
REVEAL THE INVISIBLE