



IRCameras

IRC912-SWIR INFRARED CAMERA

With a broad spectral response from 900 nm to 2600 nm, and the unmatched sensitivity of a cooled InSb sensor, the IRC912-SWIR camera is designed to address the most challenging applications for short wave infrared imagers. More versatile than traditional InGaAs cameras, the extended wavelength response of the IRC912-SWIR makes it indispensable for spectroscopy, infrared search and track, target signature, astronomy, laser detection & characterization, and other demanding SWIR imaging requirements.

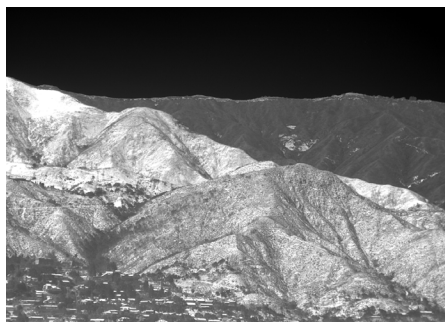
Based on digital focal plane technology, the 1280 x 1024 resolution IRC912-SWIR operates at frame rates of up to 119 Hz with cooled InSb sensitivity, low noise and no pixel crosstalk or blooming.

The IRC912-SWIR features simultaneous 14-bit CameraLink and Gigabit Ethernet digital outputs, along with analog HDMI. GPS and IRG-B inputs are available as options.



CAMERA CAPABILITIES

- Broad spectral range < 400 nm - 2500 nm
- 1280 x 1024 closed-cycle Stirling cooled InSb sensor
- 119 Hz full window frame rate
- Motorized four position warm filter wheel option
- Simultaneous CameraLink, GigE & HDMI outputs
- Optional IRIG and GPS data stamping



Infrared Imaging, LLC • Westborough, MA • 508.668.5650 • sales@infraredimaging.com

Specifications/features subject to change without notice

The products described by this document may require an export license for shipments outside of the United States. Infrared Imaging LLC must be notified at the time of order if the product will be exported so that an appropriate export license may be obtained.

DETECTOR	IRC912-SWIR
Detector type	Indium Antimonide (InSb)
Resolution (pixels)	1280 x 1024
FPA Spectral response	Standard < 900 nm to >5000 nm
Pixel pitch	12 μm
Cold Filter Options	960 nm – 2600 nm SWIR or custom filters on request
IMAGING ELECTRONICS	
Frame rate @ max window size	119 Hz (>6800 Hz in reduced window)
Integration time	< 550 ns to full frame
Dynamic range	14-bit with 13-bit option to increase frame rate at small window sizes
Windowing	User defined in 4 x 1 increments; min width = 320, min height = 8
Integration type	Snapshot, automatic selection of integrate while read or integrate then read
Ultra low latency sync	Sync I/O, integration out
Image data	Simultaneous CameraLink, GigE & HDMI
Communications	Serial over CameraLink & GigE
Software control	Cross platform GenICam compliant
PERFORMANCE	
System Spectral Response	<900 nm - 2600 nm standard
Well capacity (electrons)	2 M
Operability	99.6%
OPTICS	
Camera f/#	f/2.0, f/2.3 & f/4.0 standard; custom coldshields available on request
Lens mount	Bayonet, M42 or C-Mount
Optional filter wheel	Motorized four position warm filter wheel; 25.4 mm diameter x 1.0 mm thick filters (not available for C-mount configurations)
GENERAL	
Power @ 24 VDC	35 W
System weight	< 13 pounds
Size	8.96" x 5.13" x 6.70" (LxWxH)
Operating temperature range	-40° C to +55° C (-40° F to +131° F)
Storage temperature range	-55° C to +80° C (-67° F to +176° F)
Environmental rating	IP-51
Mounting holes	2x 1/4-20 & 4x #10-24