



IRCameras

IRC906-SWIR INFRARED CAMERA

With a broad spectral response from 900nm to 2600nm, and the unmatched sensitivity of a cooled InSb sensor, the IRC906 SWIR camera is designed to address the most challenging applications for short wave infrared imagers. More versatile than traditional InGaAs cameras, the extended wavelength response of the IRC906-SWIR makes it indispensable for spectroscopy, infrared search and track, target signature, astronomy, laser detection & characterization, and other demanding SWIR imaging requirements.

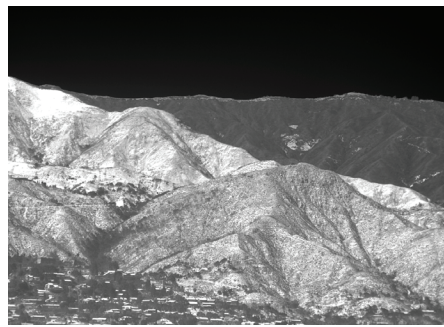
Based on digital focalplane technology, the 640x512 resolution IRC906 SWIR operates at frame rates of up to 120 Hz with cooled InSb sensitivity, low noise and no pixel crosstalk or blooming.

The IRC906 features simultaneous 14-bit CameraLink and Gigabit Ethernet digital outputs, along with analog HDMI. GPS and IRG-B inputs are available as options.



CAMERA CAPABILITIES

- Broad spectral range 900nm - 2600nm
- 640 x 512 closed-cycle Stirling cooled InSb sensor
- 120 Hz full window frame rate in full resolution
- Motorized four position warm filter wheel option
- Simultaneous CameraLink, GigE & HDMI outputs
- Optional IRIG and GPS data stamping



Infrared Imaging, LLC • Westborough, MA • 508.668.5650 • sales@infraredimaging.com

Specifications/features subject to change without notice

The products described by this document may require an export license for shipments outside of the United States. Infrared Imaging LLC must be notified at the time of order if the product will be exported so that an appropriate export license may be obtained.

DETECTOR		IRC906-SWIR	
Detector type	Indium Antimonide (InSb)		
Resolution (pixels)	640 x 512		
FPA Spectral response	Standard < 900nm to >5000nm		
Pixel pitch	20 μm (12μm option available)		
Cold Filter Options	900 nm – 2600 nm SWIR or custom filters on request		
IMAGING ELECTRONICS			
Frame rate @ max window size	120 Hz (475 Hz with 12μm pixel option)		
Integration time	< 150 ns to full frame		
Dynamic range	14-bit with 13-bit option to increase frame rate at small window sizes		
Windowing	User defined in 4 x 1 increments; min width = 320, min height = 32		
Integration type	Snapshot, automatic selection of integrate while read or integrate then read		
Ultra low latency sync	Sync I/O, integration out		
Image data	Simultaneous CameraLink, GigE & HDMI		
Communications	Serial over CameraLink & GigE		
Software control	Cross platform GenICam compliant		
PERFORMANCE			
Well capacity (electrons)	7 M (2M with 12μm pixel option)		
Operability	99.8%		
OPTICS			
Camera f/#	f/2.3 & f/4.0 standard; custom cold shields available on request		
Lens mount	Bayonet, M42 or C-Mount		
Optional filter wheel*	Motorized four position warm filter wheel; 25.4 mm diameter x 1.0 mm thick filters		
GENERAL			
Power @ 24 VDC	35 W		
System weight	< 13 pounds		
Size	8.96" x 5.13" x 6.70" (LxWxH)		
Operating temperature range	-40° C to +55° C (-40° F to +131° F)		
Storage temperature range	-55° C to +80° C (-67° F to +176° F)		
Environmental rating	IP-51		
Mounting holes	2x 1/4-20 & 4x #10-24		

*Filter wheel not available for C mount configuration